



Planners | Engineers | Consultants



mail@statconsultants.com



www.statconsultants.com



+91 94460 01295/ 70340 55444



STAT Consultancy is one of the South India's leading Consulting firm established in the year 2007, with its primary focus on Health Care services. Our verticals include Healthcare Engineering Design, Construction Project Management and Commissioning of Healthcare facilities making it a fully integrated service provider from Design to Execution and Delivery of projects after commissioning the facility (both facility and operational commissioning)

Apart from India, we have footprints on various parts of the globe like Bahrain, Saudi and Oman. A blend of both onsite and offshore components - Onsite component understands the business context to provide critical domain inputs and Offsite component helps in rapid project execution and achieves cost efficiency. We are a network of professionals with expertise in areas of Hospital conceptualization, Project Management, Engineering design, Medical Equipment Planning and Infrastructure, Design and Build of critical care and surgical areas. We have rendered 125+ projects and still counting.



Company Profile



Planners | Engineers | Consultants

50+
Engineers

Established in
2007

Completed
125+
Projects

Projects
spread across
7
Countries





15

Years of
Healthcare
Consulting



Planners | Engineers | Consultants

Healthcare Space Planning

MEP Design

Project Management

Commissioning & Post Occupancy

Engagement

Medical Equipment Planning

Design & Build



**Our
Verticals**

HTM AP (UK) certified professionals

ASHRAE certified HVAC professionals

ASHE certified commissioning professionals

Professionals trained in Sweden for pneumatic tube design and installation

Trained EH&S Officers

Post occupancy engagement in facilities



KEY STRENGTHS AND USP_s

OUR INGENUITY



Healthcare Planning

The wide-ranging and constantly evolving functions of a hospital, including highly complicated mechanical, electrical, and telecommunications systems, requires specialized knowledge and expertise. STAT, a specialized healthcare consultancy play an important role in hospital planning and design. The functional units within the hospital can have competing needs and priorities. Idealized scenarios and strongly-held individual preferences must be balanced against mandatory requirements, actual functional needs. How our Healthcare planning progresses in a project is critical for the effectiveness of the design and hence carefully crafted based on international standards and guidelines.

Healthcare Peer
Review

Functional
Program

Healthcare
Space
Planning

Defining
Process flows

Medical
Equipment
Planning

RDS & RLS

Systems
Commissioning



**Architecture and
Healthcare functional
space planning**

ARCHITECTURE & HEALTH SPACE PLANNING

Hospitals are the most complex of building types. Each hospital is comprised of a wide range of services and functional units. These include diagnostic and treatment functions, such as clinical laboratories, imaging, emergency rooms, and surgery; hospitality functions, such as food service and housekeeping; and the fundamental inpatient care or bed-related function. This diversity is reflected in the breadth and specificity of regulations, codes, and oversight that govern hospital construction and operations. STAT helps the client to arrive in the perfect design based on his project goals.

- Utilize our Operational Experience to assist with the development of new facilities, redesigns and workflow optimization in a logical approach.
- Gauge the value of risks involved and make recommendations accordingly.
- Design and facility layouts to meet healthcare standards in specialty areas.
- Evaluation of design to meet optimum patient, staff, material workflow is considered.

Medical Equipment Planning and Procurement



MEDICAL EQUIPMENT PLANNING & PROCUREMENT

Procurement and Inventory Management for your healthcare facility will be undertaken by us in a professional and systematic way which include

- Provide equipment specifications
- Inviting tenders
- Evaluating the bids/quotes
- Preparation of detailed comparative analysis
- Recommend equipment based on profile and specifications, viability in the market, service ability and price.

Specialists in BMT Unit ,OR complexes & Isolation Rooms

Bone Marrow Transplant Units and Operating Room Complexes are key critical areas in a healthcare space which demands a detailed sophisticated design primarily aiming at maximizing Infection Control methods.

STAT have designed a majority number of BMT Units in the State than any other healthcare consultant . Thanks to its years of healthcare experience and **ASHRAE certified HVAC Designers**.

Till Date we have planned, designed and commissioned more than **250 Operating Rooms** , mostly in Tertiary care hospitals throughout the region following the **ASHE Commissioning guidelines**

STAT has been selected as the Hospital Consultant by **Indian Military Engineering Services** for the renovation of **OR Complex in INHS-Port Blair , Andaman**



Healthcare planning

Defining process flows for the hospital, Planning and preparation of interior drawings of all Clinical areas and facilities like Modular OT's, X-ray facility, Cathlab, MRI, CT, ICU(main and step down), Pneumatic Chute, wards, OPD, Specialty Labs, CSSD, dietary and laundry with capital equipment, medical equipment, fit-out, MEP Provisions and furniture.

Layout for managing patient, men and material movement, position of the equipment, furniture design etc. will be prepared for the facilities.

Providing technical support for the preparation of specifications, selection, installation, certification etc. till the commissioning of the equipment.

RDS & RLS

We at STAT have a well versed in-house design team who can help ensure that the correct choice of details required i.e. finishes, fixtures, fittings, mechanical and electrical for each space to be sketched and detailed in a data sheet, extensively known as the ROOM DATA SHEET (RDS).

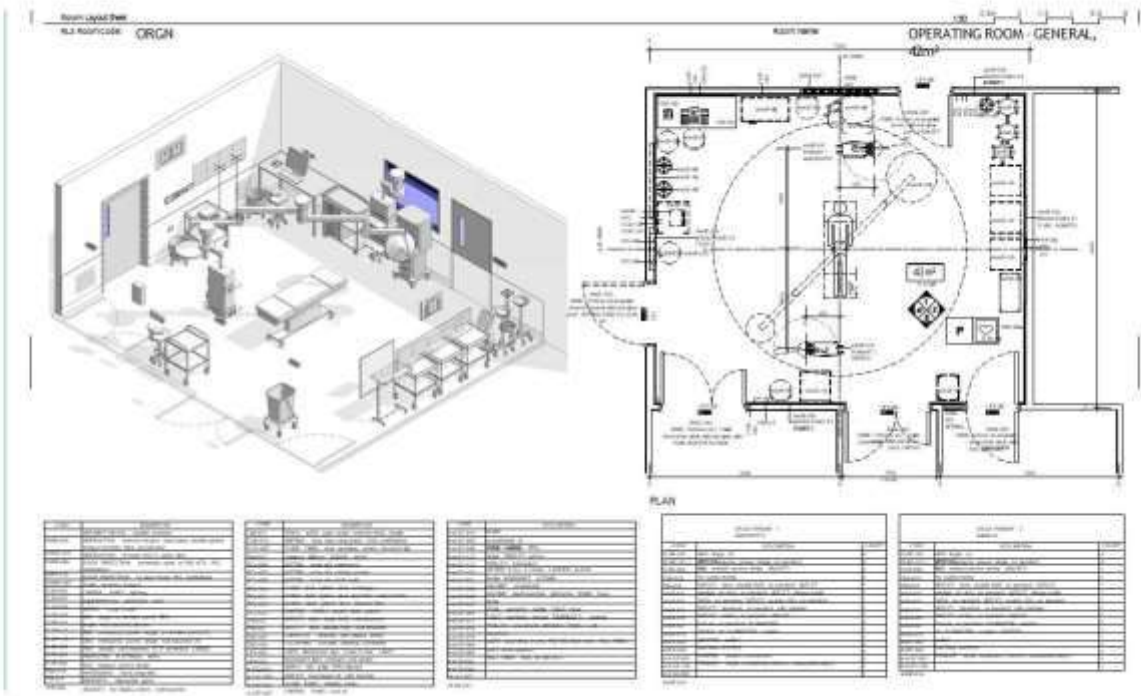
Room Name	Operating Room - General 42m ²	Room Number	ORGN
Revision	4		
Issue Date	20.03.17		

BRIEFING	
Briefed Area	42.00 m ²
Hours of Operation	24 Hours
Occupancy	1 patient, 5 - 11 staff
Acoustics	
Remarks	
Description/ Special Requirements	The Operating Room - General provides an aseptic environment in which to carry out surgical procedures under local, regional or general anaesthetic. The General Operating Room may be used for General surgery and specialties including ENT, Urology, Gynaecology, Ophthalmology, Plastic Surgery and any other procedures that do not require bulky equipment. The Operating Room will have direct access to a Scrub-up Room, exit bay and sterile stock/set-up area. Additional Design Considerations: Minimum critical dimension 6000mm. 'Laser In Use' warning lights may be required outside all exit doors to room if laser equipment is to be used. Lead shielding may be required depending on use of X-ray equipment - to be assessed by Radiation Consultant. External windows are desirable - double glazed with integral venetian blinds.

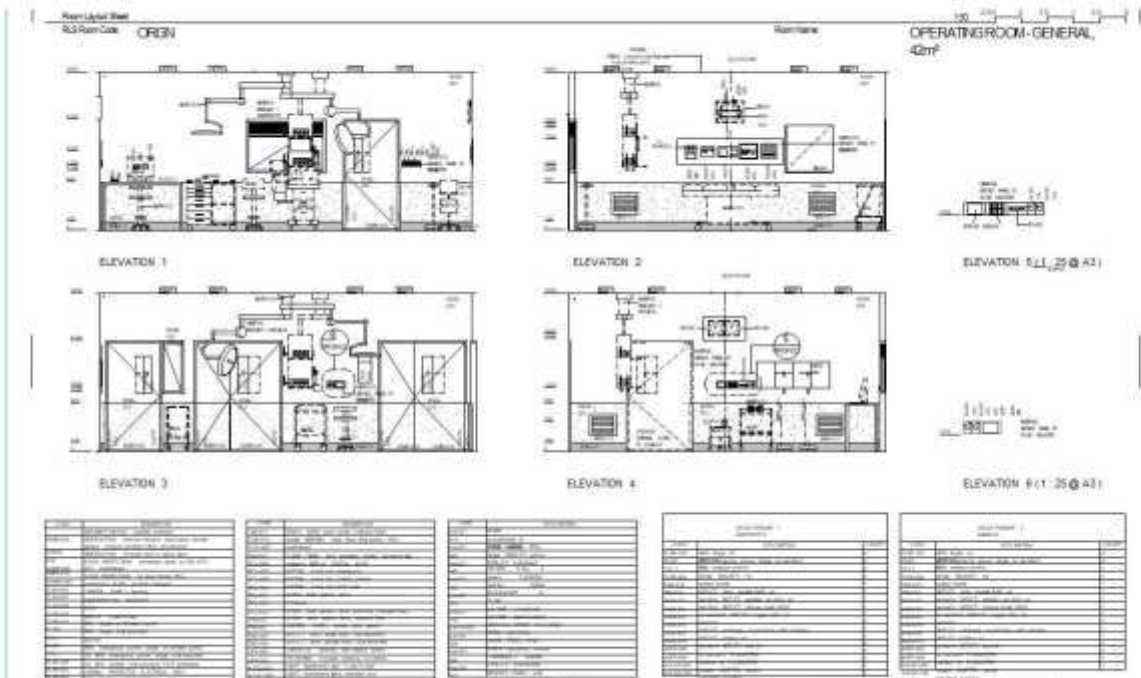
SERVICES:		
General Requirements	BODY PROTECTED = No AIRCONDITIONING = No AIRCONDITIONING: positive pressure = Yes EXHAUST: room exhaust = No	CARDIAC PROTECTED = Yes AIRCONDITIONING: hepa filtered = Yes AIRCONDITIONING: negative pressure = No VENTILATION = No
Lighting	LIGHTING: colour corrected = Yes LIGHTING: downlights = No LIGHTING: fluorescent, downlights = No LIGHTING: fluorescent, general = No	LIGHTING: dimmable = No LIGHTING: downlights, dimmable = No LIGHTING: fluorescent, flush with ceiling, tamper proof = No LIGHTING: indirect = No
Nurse Call	NURSE CALL SYSTEM = Yes	

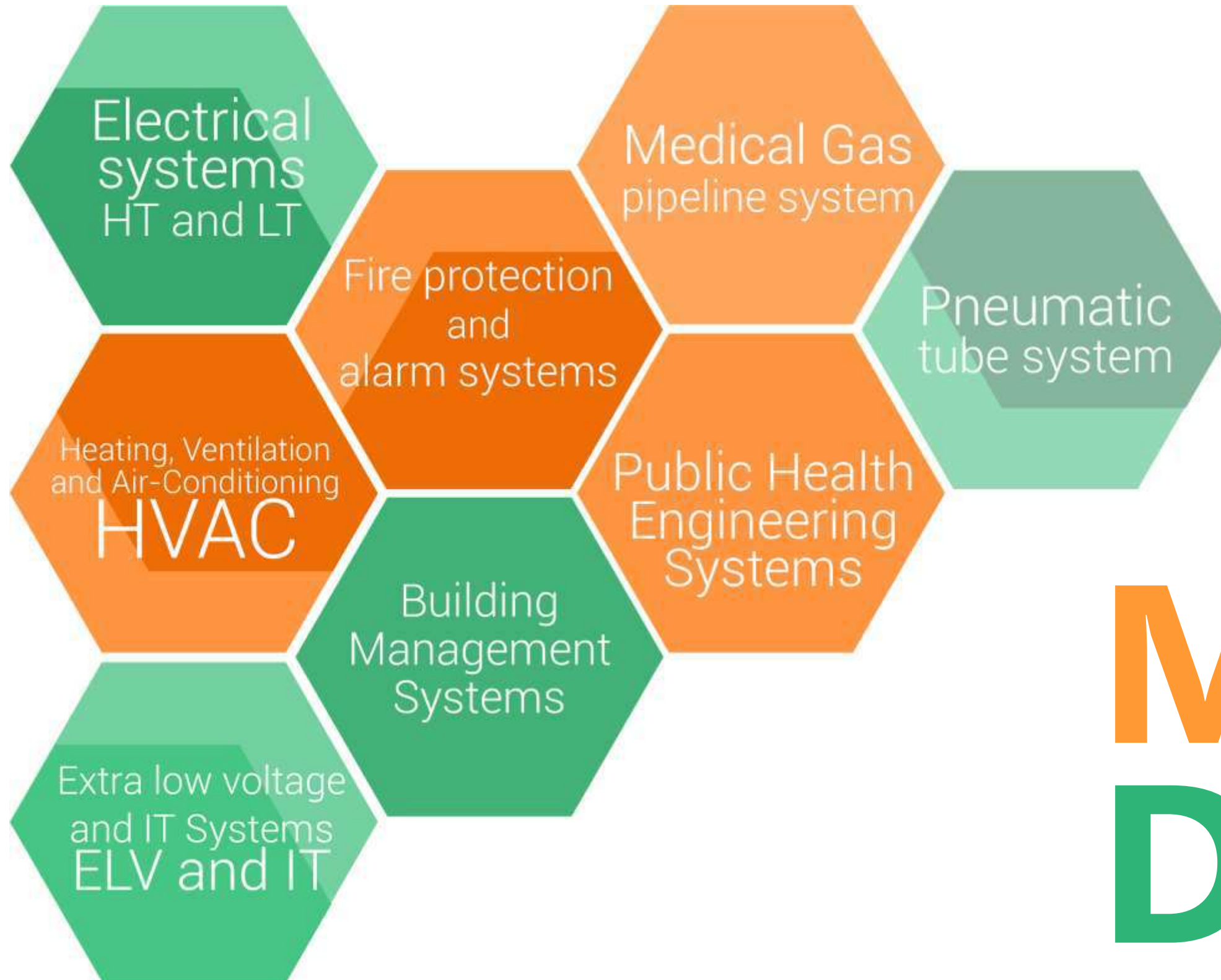
Applied code	Description	Comment
CLFS-006	CEILING: plasterboard, flush set, suspended, paint, washable	
CLCN-007	CORNICE: plasterboard, flush coved between wall and ceiling, paint	
DWGL-020	DOOR: 1100mm c/o, single leaf, observation panel, solid core/glass, paint	1100mm clear opening, to clean-up room, quantity to suit layout
DWGL-042	DOOR: 1500mm c/o, 1 1/2 leaf, observation panel, solid core/glass, paint	1500mm clear opening to patient entry/exit, quantity to suit layout
DWGL-005	DOOR: 910mm c/o, single leaf, observation panel, solid core/glass, paint	910mm clear opening to setup/scrub rooms, quantity to suit layout
DWPR-006	DOOR PROTECTION: protection plate, to 900 AFFL PVC, prefinished	Equal to Acrovyn
DWPR-010	DOOR PROTECTION: to door frame, PVC, prefinished	Equal to Acrovyn
FLVY-007	FLOOR FINISH: vinyl, seamless, coved, standard slip resistant	
DWOB-003	OBSERVATION: internal window, alum/glass, double glazed, integral venetian blind, powdercoat	optional
DWOB-010	OBSERVATION: through door's, glass, clear	with cover (sliding)

Plan and layouts of the space that comply to the data sheet that help in innovative planning and meeting design guidelines can be prepared for your purview known as ROOM LAYOUT SHEET (RLS).



It is widely practiced at International Health Facility Guidelines (IHFG) and extensively used in East-Asia, Australia & Middle East. We are fortunate to work with the people who made this comprehensive set of standard components.





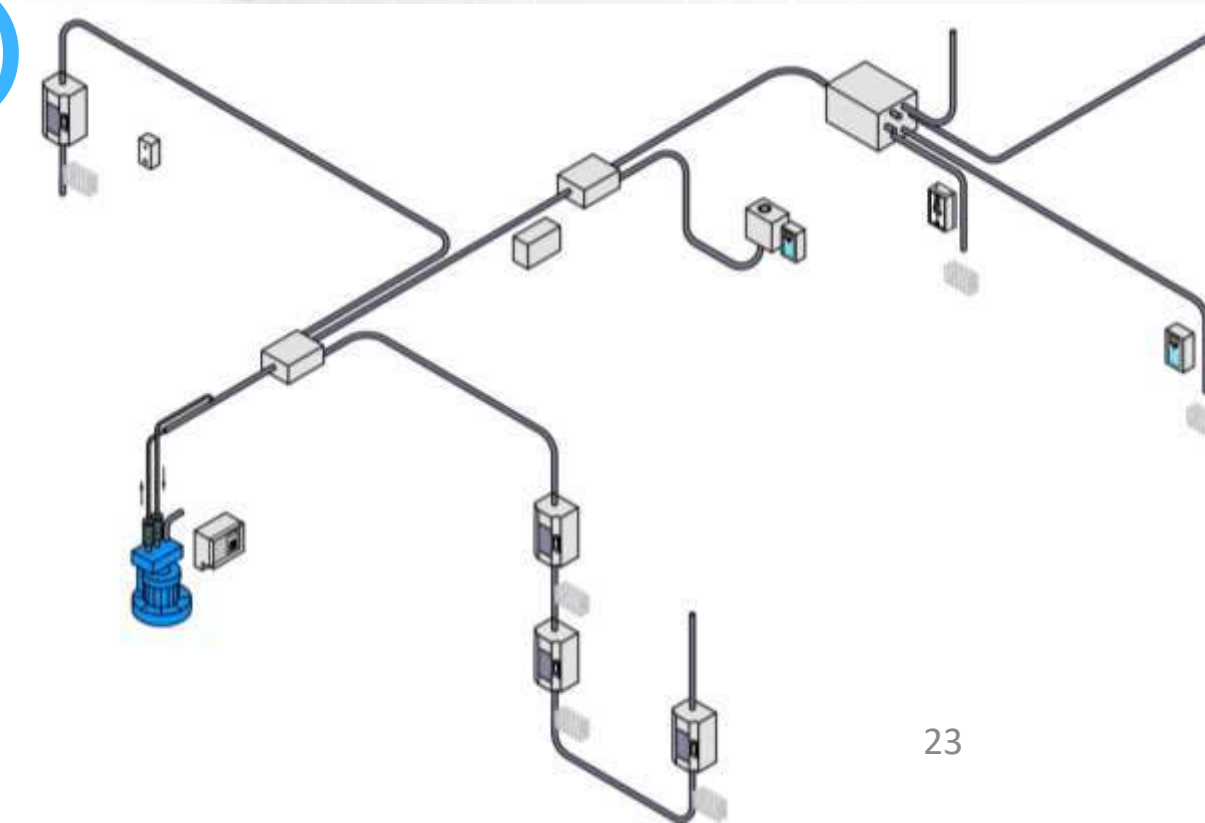
MEP Design

6. Medical Gas Pipeline System (MGPS)

- A medical gas pipeline system (MGPS) is installed to provide a safe, convenient and cost-effective system for the provision of medical gases to the clinical and nursing staff at the point-of-use.
- Patient safety is paramount in the design, installation, commissioning and operation of medical gas pipeline systems. The basic principles of safety are achieved by ensuring quantity of supply, identity of supply, continuity of supply and quality of supply.

7. Pneumatic Tube System (PTS)

- Pneumatic tube systems (PTS) helps hospitals meet patient needs by efficiently transporting drugs, documents and specimens to and from nurses' stations, labs, inpatient and outpatient pharmacies, blood banks and the ED.
- In addition to relieving vital staff members of the routine transport of lab samples and medications, pneumatic tube systems deliver these items in a fraction of the time. Perhaps even more important than increased efficiency is the fact that critical samples and medications reach their destination in seconds vs. minutes.



Project Management

LEAN Project Delivery

STAT is practising LEAN methods to achieve the best product for our clients. Lean construction, perhaps the signature application of Lean thinking in project management, focuses on core Lean principles of defining customer value, maximizing value while minimizing waste, adopting a "pull" approach, seeking continuous flow, and empowering project participants with information. Simply, lean means creating more value for customers with fewer resources.

STAT Consultancy Pvt Ltd.



1. Project Methodology

Designers &
Consultants

Owners &
end users

Contractor

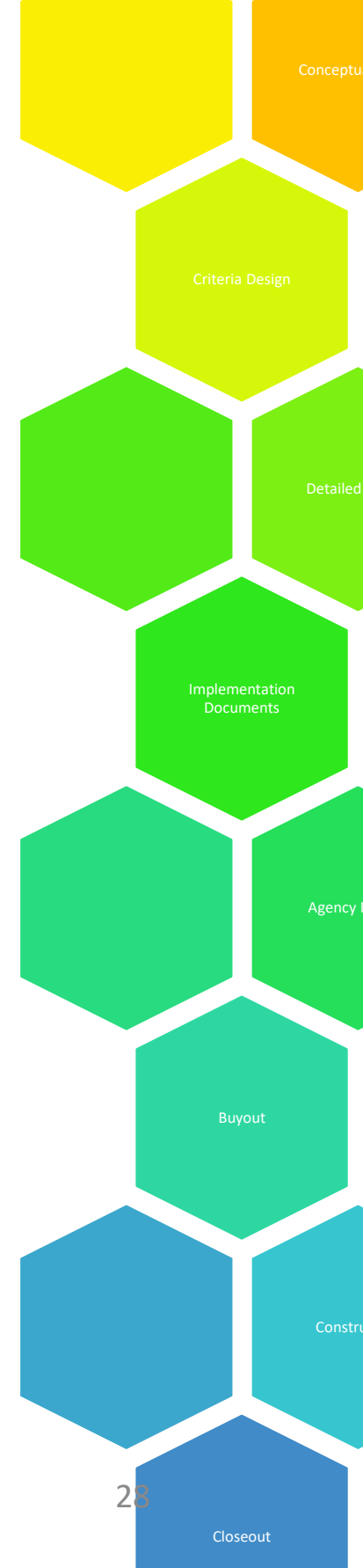
**INTEGRATED
PROJECT DELIVERY (IPD)**



2. Project Execution/ Project Phases

- Integrates people, systems, business structures and practices into a process that collaboratively harnesses the talents and insights of all participants to reduce waste and optimize efficiency through all phases of design, fabrication and construction.
- IPD is the process; BIM and Last Planner are the collaborative tools

- Conceptualization
(to determine WHAT is to be built, WHO will build it, and HOW it will be built)
- Criteria Design
- Detailed Design
- Implementation Documents
- Agency Review
- Buyout
- Construction
- Closeout



3. SEQUENCING OF THE PROJECT

The following are detailed list of activities included in the management services by stages:

3.1

PRE-CONSTRUCTION STAGE

- Preparation of Project Brief
- Identify all project stakeholders
- Mobilize Project Management and Professional teams
- Attend project coordination meetings with the Client, Consultants and project stakeholders
- Manage Design team
- Preparation of Design schedule and Tracking of the same
- Preparation of Drawing delivery schedule which is to be enforced upon the consultants so as to meet the required time line
- Assist in design coordination. Reviewing all the drawings and ensuring fully coordinated drawings. Identification, discussion with respective consultant and rectification of flaws in the drawings
- Preparation of comprehensive planning documents with regard to the following with a focused approach on hospital building
 - Preparation and submission to the Client a Project Milestone Plan, which will identify Project Target dates, all critical milestone dates and Constraints throughout the Project life cycle
 - Prepare communication protocols, including project specific web site.
 - Provide input on issues of constructability and construction related issues
 - Commence Government Applications Process
 - Negotiate works contracts



- Provide recommendations regarding Project Insurance
- Prepare detailed Project budget
- Set criteria to prequalify contractors
- Liaison and communicate with Authorities having Jurisdiction
- Issue monthly reports
- Participate in partnering sessions
- Establish cost control program and cash flow for construction stage
- Provide and maintain project cash flow for work packages
- Prepare a cost estimate during the design stage
- Identify construction packages
- Preparation & Submission of Health & Safety Manual with specific focus on the hospital safety. This manual will be enforced upon the contractor
- Preparation & Submission of Quality Assurance Manual with a focus on QA of specialized items required to be used in the hospital building. This manual will also be enforced upon the contractor.
- Identify long delivery items
- Participate and advise in value engineering sessions

3.2

CONTRACT DOCUMENT STAGE

- Attend all project coordination meetings
- Review construction documents for constructability, bid ability, and coordination
- Contracting Strategy: Decision on type and number of tender package for optimum cost & time
- Comprehensive Prequalification Document to suite the contracting strategy as well as client's requirements
- Preparation of procurement schedule
- Prepare and update project schedule
- Provide advice on alternatives to system and procedures to improve schedule or reduce budget
- Assist and advise the Client, in conjunction with the other consultants engaged on the Project, to establish a list of long lead items and advise on direct procurement strategies(if required) to meet the Project Master Programme
- Review consultant cost estimates
- Prepare independent cost estimates at project milestones including detailed work sheets
- Provide Monthly Progress reports including Cost Schedule reports
- Identify required permits, licenses and approvals

3.3 TENDER STAGE

- Provide comments and advice on the tender schedule and tender packages
- Review final tender documents and make recommendations on bid-ability
- Provide advice, assistance and recommendation on the pre-qualification
- Attend tender briefings and assist the Consultants in the preparation of addenda
- Attend job showings and assist the clarification of site issues
- Detailed and comprehensive analysis of all tenders and prepare recommendations for appointment to the Client
- Liaise with the Client to ensure that Letters of Intent or Letters of Acceptance (as applicable) are issued without delay. Review and confirm to the Client prior to issue that such Letters properly reflect the Client's requirements.
- Provide the client with cost information, as requested, prior to negotiations with any bidders
- Review Contractor's Construction programme and check its compliance with the master program
- Liaise and communicate with authorities having jurisdiction
- File for notice of project with appropriate Local Government Authorities
- Preparation of site utilisation and site logistics plans, to include all temporary supplies, contractors working areas, temporary access and any other such matter to plan for the works to proceed in an organised and controlled manner
- Provide advice on any packages that are required to be re-tendered
- Liaise and communicate with Authorities



3.4 CONSTRUCTION STAGE

- Maintain a daily progress report
- Finalize detailed baseline construction program with contractor/s
- Submit monthly written reports including budget and scheduling information
- Provide ongoing administration support
- Maintain complete and updated project files, drawing and specifications
- Verify the dissemination of design information amongst the Client and the consultants in a timely manner such that abortive work is avoided or minimised as much as practicable
- Coordinate approval of shop drawings by consultants. Establish procedures for tracking shop drawing and samples
- Provide construction supervision to perform defined activities
- Conduct ongoing site safety orientation sessions for all persons entering the site
- Chair joint health and safety committee meetings
- Evaluate trade contractors for compliance with health and safety policies
- Monitor the all necessary Contractor's submittals, mock ups and prototypes, other consultant' inspections and approvals are obtained / carried out in accordance with the Contractor's construction programme

- Monitor and inspect all General Contractor’s work
- Conduct periodical site meetings
- Written communication with contractors
- Assign a health and Safety Supervisor
- Provide a monthly Health & Safety performance report
- Identify and report project risks. Provide mitigation measures
- Plan and manage site security
- Review change notices and forward independent estimates to the Client
- Analyze variation items & recommend/reject
- Maintain detailed log of changes
- Review regulations to identify and monitor permits, licenses and approvals
- Verify and Recommend payment of Contractor invoices
- Monitor requests for information from Contractors and responses from Consultant team
- Inspect and determine that all shop drawings, site instructions and samples are complete

- Maintain Anticipatory Cost Report to keep track on the awarded sum
- Monitor plan Vs actual on monthly basis & determine variance
- Assist in the resolution of disputes
- Participate in partnering sessions
- Project record keeping

3.5

POST CONSTRUCTION STAGE

- Provide advice and recommendations on all aspects of commissioning
- Manage and record as built drawings and specifications
- Assist in the interim and final inspections
- Prepare defect lists, indicating the items of work remaining to be accomplished and ensure that these items are completed in an expeditious manner.

- Snagging / De-snagging and handing over to the end user.
- Confirm accuracy of warranties and transfer to the Client prior to final certificate
- Continue with the implementation and management of the Commissioning Plan
- Manage all maintenance manuals, operating instructions and turn it over to the Client
- Monitor and co-ordinate the handing over spares to the Client, provided under the Construction Contracts, in conjunction with the other consultants engaged on the Project
- Inspection prior to the expiration of any warranty, and advice the Client.
- Prepare post construction evaluation and cost analysis report
- Establish the certification of total performance
- Arrange for the issuing of substantial completion certificates and holdback releases
- Produce a final report on the project

TRAINING AND DOCUMENTATION

STAT will facilitate the training of operating personnel to assure full knowledge of building and systems and full operational autonomy of systems and equipment and prepare and present documentation and reports on commissioning.

FINAL REPORT ON COMMISSIONING

Upon completion of the acceptance of the project, STAT will present to the Client a final report on commissioning. The final reports will include the following elements:

- Summary of the approach to commissioning.
- Summary of the systems, subsystems, components and equipment verified and tested and the results obtained, identifying the conditions and means of maintenance to ensure optimal conditions for efficiency and performance.
- A summary of the areas verified and the results obtained, identifying the conditions and means to be maintained to ensure optimal conditions for efficiency and performance.
- Notes and comments with regard to available excess capacity
- Identification of tests and verifications to be performed after delivery of the building to maintain optimal conditions for efficiency and performance.
- Identification of possible improvements to efficiency and performance
- Verify that adequate equipment maintenance training is implemented by the Contractor(s) in accordance with the terms of their contracts prior to handover to the Client's maintenance team



OPERATING AND MAINTENANCE MANUALS

STAT will ensure that contractors prepare and submit operating and maintenance manuals that shall include:

An index to allow quick and easy retrieval of the information required including a table of contents, a list of systems, a list of equipment in each system, etc.

A document for emergency situations must include all the information required in case of major failure or emergency situation. This document must be easy to understand by technical and non-technical personnel.

AS-BUILT DOCUMENTS

STAT ensures that as-built drawings in both hard and electronic versions are provided by the contractors and coordinated by the Consultants team prior to being verified by STAT's Design Review team for submission to the Client.

Healthcare Commissioning



Delivering Healthcare facilities Faster. Better.

Bridging the GAP



Operational Commissioning

Evolution

- Owners Project Requirements
- Basis Of Design

Key Parameters

- Performance
- Operations
- Maintenance
- Longevity
- Energy efficiency

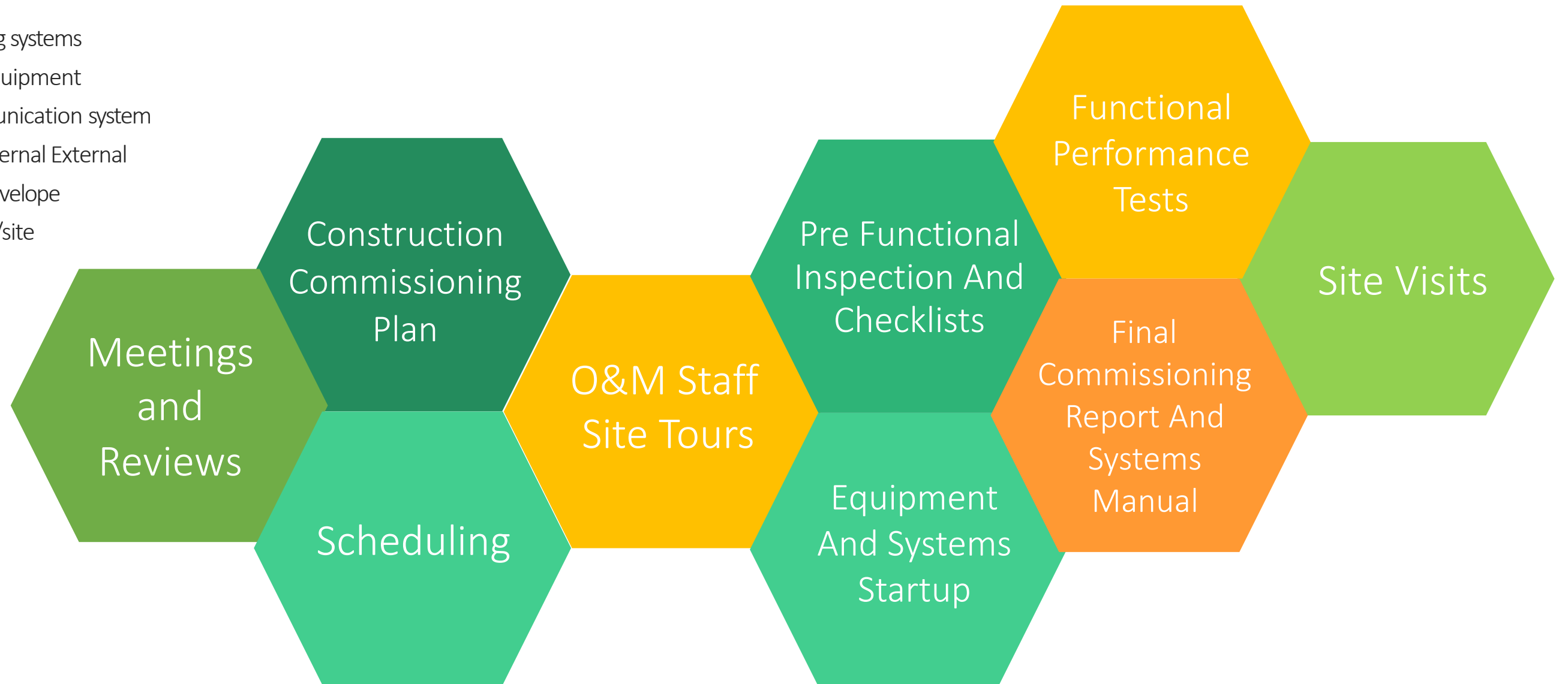


Key Focus

- Better Care delivery
- Increase Patient safety
- Enhance patient experience
- Streamline ergonomics
- Focus on Occupant safety
- Optimum systems utilization
- Maximize efficiency

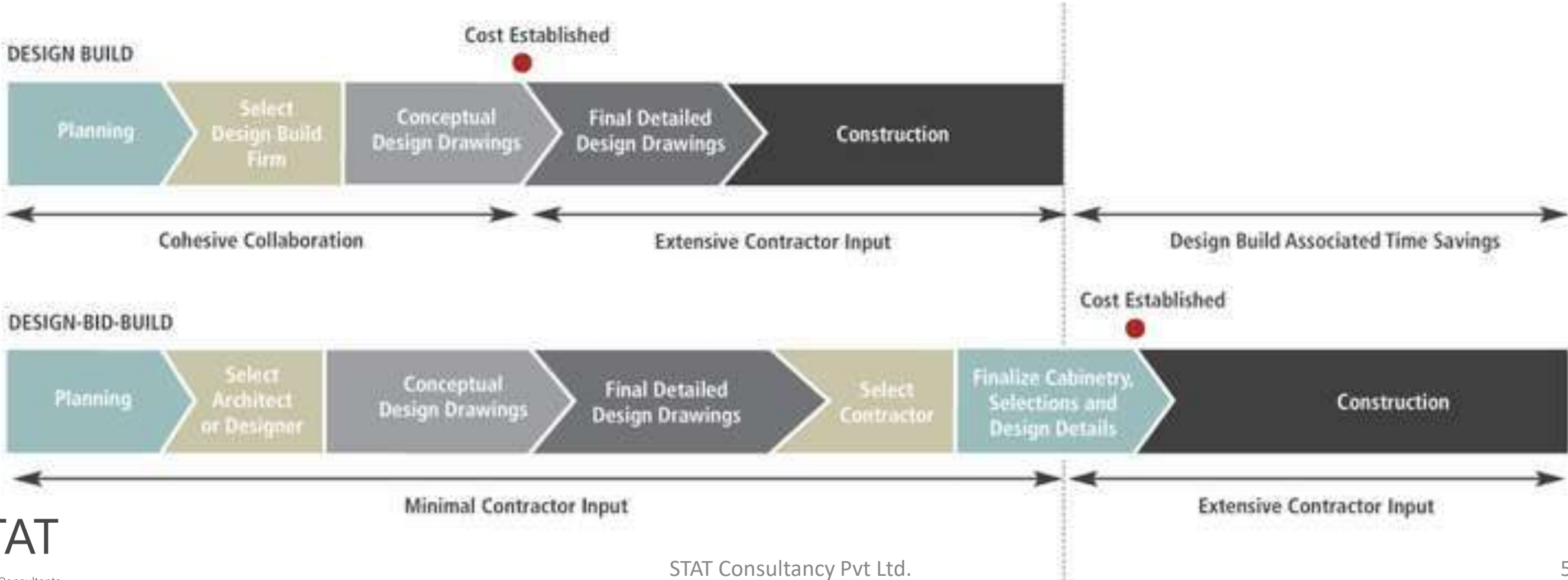
Facility Commissioning

- Development of Utility Management Plan
- Comprehensive training for maintenance staff
- Commissioning of
 - Infra
 - Engineering systems
 - Medical Equipment
 - IT – Communication system
 - Signage-Internal External
 - Building Envelope
 - Landscape/site



A construction delivery method that provides owners with a single point of contact for both the design and construction phases of a project. STAT holds single-source responsibility and contractual risk for every aspect of a build — from estimation, assessments and pre-construction to architecture, schematics, engineering, subcontracting, construction and post-construction. STAT manages all contracts with companies, such as subcontractors, equipment vendors and materials providers. Because the project is more efficient and construction can actually begin before the final designs are completed, owners can occupy their facilities sooner.

Design & Build



Site Audits

Safety and functional audits

Often neglected, engineering systems and its vulnerability in creating potential hazards can cause serious damage to the facility as well as the customers which can be prevented through a systematic safety approach and planning.

Continually tracking energy has proven to be an essential component in managing a building's energy. The effective processes for identifying savings opportunities in existing equipment by optimizing resources and controlling operating costs must be adopted.



CLASSIFICATION

- **Physical**
 - MEP Systems
 - Infrastructure
- **Non Physical**
 - Operational
 - Process flows
- **Clinical**
 - Clinical Practices
 - Error Reduction

Clientele



ALSALAM
SPECIALIST HOSPITAL
مستشفى السلام التخصصي





LARSEN & TOUBRO



Khimji Ramdas

SINCE 1870



Malabar Medical College Hospital & Research Centre

Discover a new life



EMS Memorial Co-operative Hospital, Perinthalmanna



Lourde Hospital



A UNIT OF POYANIL HOSPITAL



KIMS KOCHI

KERALA INSTITUTE OF MEDICAL SCIENCES



KIMS OMAN HOSPITAL



مستشفى كيمز عمان



REGIONAL CANCER CENTRE THIRUVANANTHAPURAM



HAIR FAIR



SNMM HOSPITAL

ESTD 1945



KIMS Management Internationale



ಆಲ್ಟಿಯಸ್ ಹಾಸ್ಪಿಟಲ್ ALTIUS HOSPITAL



Devi Hospital

The healing touch...



SATTVIK SPINE & SCOLIOSIS CENTER



AL RASHIDIYAH PVT POLYCLINIC BUR DUBAI



KIMS AL SHIFA SUPER SPECIALITY HOSPITAL

Perinthalmanna - 679 322, Malappuram Dist., Kerala, India



PARUMALA HOSPITAL



Project Experience

Selected Projects



Project: KIMS East

Location: Kerala, India

Scope of work :

MEP Design Consultant,
MEP Project Management &
Facility Commissioning
Structural Design Consultant
Healthcare Peer Review consultant
4.5 lakh sq.ft , State of the Art

Project Highlights :

STAT Consultancy Pvt Ltd.

Project: Fortis- Gr. Noida

Location: Sector 28, Gr. Noida, UP

Scope of work : Hospital Consultant
MEP Project Management &
Facility Commissioning
Medical Equipment Planning,
Tendering, Technical negotiation, Installation and Commissioning

Project Highlights : 2.5 lakh sq.ft , (250 Beds)



Project : King Hamad American Mission Hospital

Location: Al Ali, Manama - Bahrain

Scope of work : Hospital Consultant

MEP Project Management &

Facility Commissioning

RLS & RDS, Installation and Commissioning

Project Highlights : 6.5 lakh sq.ft , -

Largest Private Hospital In Bahrain



Project : Suntec Technocity (IT campus)

Location: Thiruvananthapuram, Kerala-India

Scope of work : MEP Design Consultants (Base Build and Interior)

Project Highlights : 3.25 lakh sq.ft , - Main Tower , Club House and External



Project : Cochin International School (COCHINS)

Location: Kochi , Kerala- India

Scope of work : MEP Design Consultant and Periodic Work Supervision

Project Highlights : 1.3 Lakhs SFT (Academic Block and Allied)





Project: Mar Sleeva Super Speciality Hospital,

Location: Kerala, India

Scope of works: Project Management Consultancy,
Medical Gas Design
Healthcare space planning consultant

Project Highlights: 600 bedded Hospital, at Paalai, Kerala



FLORA AIRPORT HOTEL

Project: **Flora Airport Hotel**

Location: Kochi International Airport, Kerala

Scope of work : Air Conditioning System Design

Project: Rajagiri Hospital

Location: Kerala, India

Scope of work : Project Management Consultant
Healthcare space design review
Medical Gas Design Consultant

Project Highlights : JCI NABH accredited 550 bedded Super Specialty Hospital



Project: Meitra Hospital

Location: Kerala, India

Scope of work : : Project Management Consultant
Healthcare space review
MEP Design Review

Project Highlights : 400 bedded Pre-fabricated centre of
excellence at Calicut



Project: KIMS Hospital

Location: Kerala, India

Scope of work :

Turnkey Design Consultant
Project management consultant

Project Highlights :

IGBC Gold rated 200 bedded Hospital
at Kollam, Kerala.





Project: Parco Hospital

Location: Kerala, India

Scope of work : :Project Management Consultant

Project Highlights : :600 bedded Super specialty hospital at Vadakara, Kerala





Project: Parumala Hospital

Location: Kerala, India

Scope of work : MEP and Project Management consultancy
Surgical and critical care area design consultant

Project Highlights : 300 bedded Cancer Care Center at Parumala, Kerala



Project: Altius Hospital

Location: Karnataka, India

Scope of work : Project Management consultant

Project Highlights : 100 bedded Hospital at Bangalore, Karnataka.

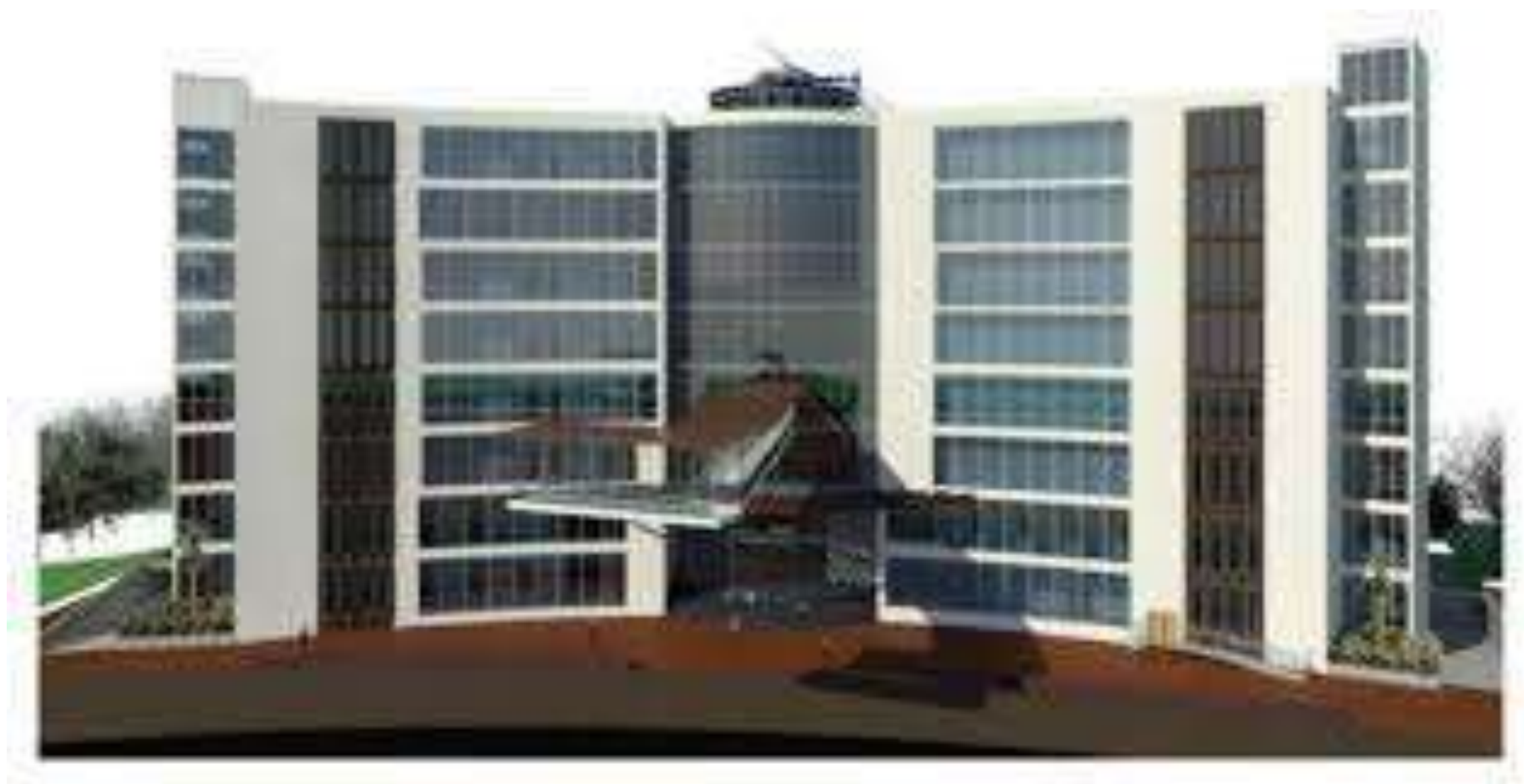
Project : SP Fort Hospital

Location : Kerala, India

Scope of works : MEP Design and Project Management

- 350 bedded Multi Speciality Hospital
- 3,50,000 Sq.ft facility
- Consultants for
 - HVAC
 - ELECTRICAL
 - PLUMBING
 - MEDICAL GAS PIPING SYSTEM
 - ELV
 - FIRE FIGHTING SYSTEM





श्री चित्रा तिरुनाल आयुर्विज्ञान और प्रौद्योगिकी संस्थान, त्रिवेंद्रम
विज्ञान एवं प्रौद्योगिकी विभाग, भारत सरकार के अधीन एक राष्ट्रीय महत्व का संस्थान

Sree Chitra Tirunal Institute for Medical Sciences and Technology, Trivandrum
An Institution of National Importance, Department of Science and Technology, Govt. of India

Project : SCTIMST Swasthya Suraksha Block

Location: Kerala, India

Scope of work :

MEP Design Review Consultant

Healthcare space planning

Medical Equipment consultancy

Project Highlights :

170 bedded hospital expansion for
Sree Chitra Institute, Trivandrum.

Project: KIMS Hospital

Location: Kerala, India

Scope of work : Project Management Consultant
Medical Equipment Consultant
Healthcare space review
MEP Design Consultant

Project Highlights : 750 bedded super specialty hospital at Trivandrum, Kerala



Project: Royal Bahrain Hospital

Location: Bahrain, GCC

Scope of work : MEP Design Consultant
Medical Equipment consultancy

Project Highlights :65 bedded hospital, Bahrain.



Project: Hospitals for Govt. of Kerala by KSHB

Location: Multiple locations across Kerala

Scope of work : Healthcare space planning
 MEP Design

Project Highlights : Expansion and revamping of Taluk Hospitals at 6 locations across the state entrusted to KSHB.

Project: St. Thomas Hospital

Location: Kerala, India

Scope of works : Engineering Design Consultancy
 Hospital Consultancy
 Project management

Project Highlights: Extension block of 100 bedded Hospital



Project: EMS Co-operative Hospital

Location: Mukkam, India

Scope of works : Engineering Design Consultancy
 Hospital Consultancy

Project Highlights: 300 bedded Hospital at Mukkam



Project: Providence Hospital

Location: Kerala, India

Scope of works : Project Management
MEP Design
Healthcare Consultancy

Project Highlights: 120 bedded Hospital at Alappuzha, India



Project: Al Salam Specialist Hospital,

Location: Bahrain

Engineering and Healthcare Consultancy
for 100 bedded Hospital at Bahrain

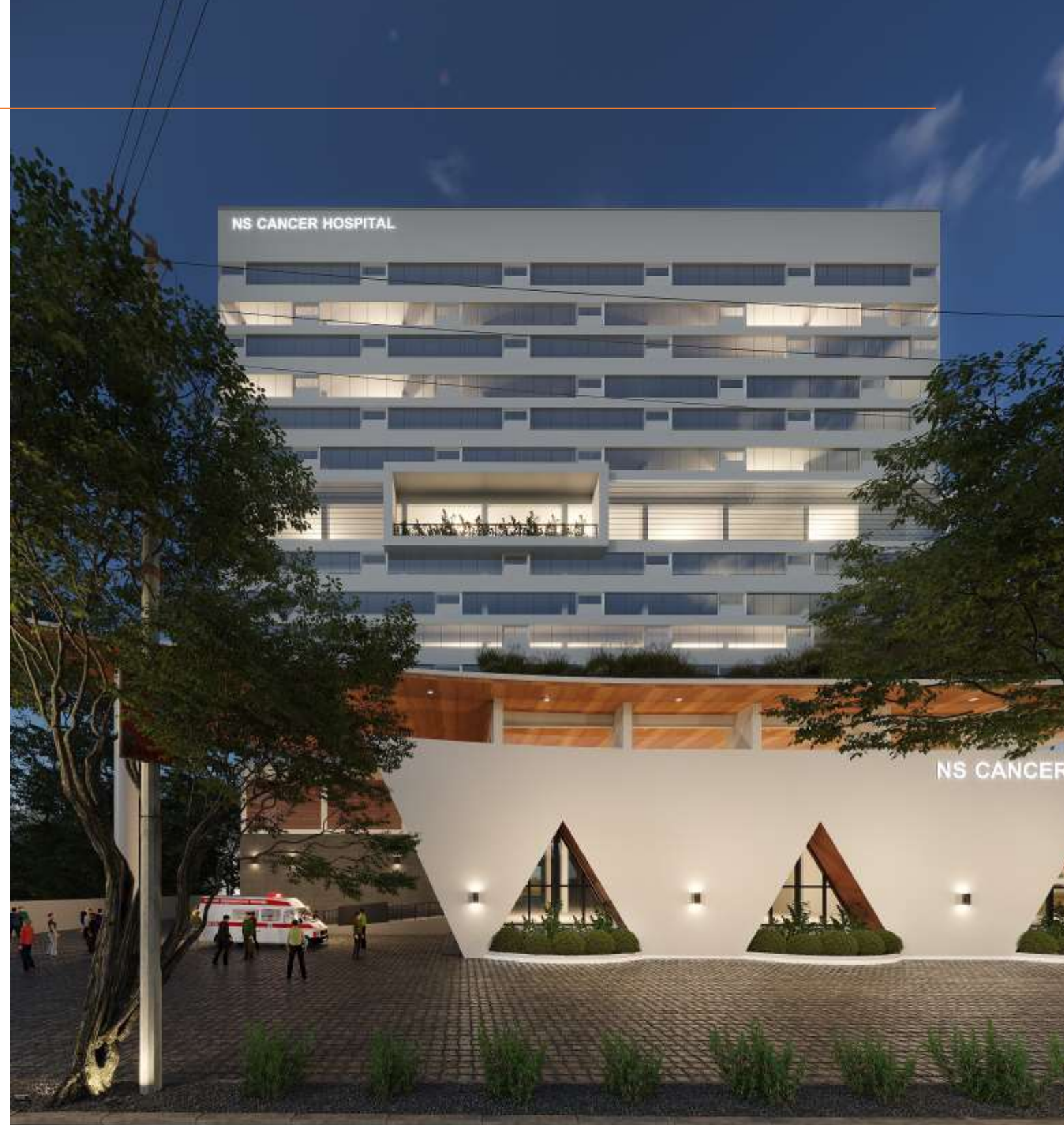


Project: NS Mediland Oncology

Location: Kerala, India

Scope of work : Health space planning Consultant

Project Highlights : Hospital consultancy for ULCCS for the 250 bedded Oncology hospital at Kollam , Kerala





NS CANCER HOSPITAL
Kollam
Kerala



P.O Madappally College,
Valakara, Kozhikode, Kerala. 673 102
Phone: +91 496 2514042, 2516402
Website: www.ulccsfd.com
E-mail: uralungal@ulccsfd.com



Project: NS Mediland

Location: Kerala, India

Scope of work :
MEP Design Review
MEP Supervision
MEP Commissioning

Project Highlights :
Consultancy for NS Co-Op Hospital for the Ayurveda, Geriatric
and Oncology Blocks of cumulatively 4 lakh Sq.ft Facility at
Kollam , Kerala

Project: KIMS Belrose Hospital

Location: Kerala, India

Scope of work : Project Management Consultant
Medical Equipment Consultant
MEP Design Consultant

Project Highlights : 200 bedded multi specialty
hospital at Kottayam, Kerala





Project: Renai Medicity,

Location: Kerala, India

Project Management and
Healthcare Consultancy
of 400 bedded Medicity, Kochi, India



Project: Hussain Al Owainati Hospital

Location: Bahrain

Engineering and Hospital Consultancy of 100 bedded Hospital



Project : KIMS Oman Hospital

Location: Sultanate of Oman

Project Details : Engineering and Equipment Consultancy of 65 bedded Hospital

Project : Qaseem National Hospital

Location: Saudi Arabia

Project Details : Facility Gap Analysis of 100 bedded Hospital



Project: Dr.Vivek's Clinic, Trivandrum

Location: Kerala, India

Scope of work : Healthcare space review
MEP Design Consultant

Project Highlights :25 bedded specialty care center at
Trivandrum, Kerala



Project: Al Rashidiyah Poly Clinic, UAE

Location: Dubai, UAE

Scope of work : Due diligence for KIMS Management Internationale.

Project Highlights : Multi specialty clinic in Al Raffa, Dubai

STAT Consultancy Pvt Ltd. **Day care Centers and Clinical spaces** 120



Project: Lifestyle Clinic

Location: Kerala, India

Scope of work :

MEP Design Review Consultant
Healthcare space planning
Project Management Consultant

Project Highlights :

20,000 sq.ft endocrinology clinic at Malappuram, Kerala



Project: Defence lab

Location: Bahrain

Scope of work : Clinical Lab Space Design.

Project Highlights : An initiative by the Royal Bahraini Air force ..



RIGHT HEALTH

Emerging Healthcare Brand 2018



Project: Right Health Facilities,

Location: 32 locations in UAE

Scope of work : Due Diligence for KIMS Management Internationale.

Project Highlights : One of the largest clinic chain across Abu Dhabi, Dubai and Sharjah..

Project: Sattvik Spine and Scoliosis Center

Location: Bengaluru, Karnataka

Scope of work : Health Space Design, Engineering Design, PMC

Project Highlights : A Speciality hospital at Bangalore ,India



Project: Lifestyle Clinic

Location: Kerala

Scope of work : Design, Value engineering and PMC.

Project Highlights : 18000 sq.ft Exclusive lifestyle clinic at Perinthalmanna

Project: Catherine Booth Hospital

Location: Tamil Nadu, India

Scope of work : Turnkey Design and Project management

Project Highlights : Renovation of 120 year 100 bedded hospital project at Nagercoil, Tamil Nadu



Project: Dr. Alok's Clinic

Location: Telengana, India

Scope of work : Turnkey Design

Project Highlights : Renovation of Multi storied 7500 sq.ft Clinic at Charminar, Telengana.

Health Facility Renovations

Project: Najath Hospital

Location: Kerala, India

Scope of work : Turnkey Design and Feasibility Study

Project Highlights : Renovation and feasibility study of 50 bedded hospital at Malappuram



Project: Devi Hospital

Location: Kerala, India

Scope of work : Turnkey Design and Project Management

Project Highlights : Renovation of Labor and OT complex for 50 bedded hospital at Kochi, Kerala

Design of Clinical Laboratory

Design and supervision of Emergency Dept.

Health Facility
Renovations



Project: Malabar Medical College

Location: Kerala, India

Scope of work : Turnkey Design and Project management

Project Highlights : Installation of cathlab and renovation of other critical care departments.



Project: KIMS Al Shifa

Location: Kerala, India

Scope of work : Turnkey Design and GAP analysis

Project Highlights : Renovation of old block at
KIMS Al shifa Hospital, Perinthalmanna.



Project: St. Thomas Hospital

Location: Kerala, India

Scope of work : Turnkey Design and Project Management

Project Highlights : Renovation of Cardiac, pediatric, Neuro departments in 450 bedded Hospital in Changanassery, Kerala



Project: St. Mary's Hospital

Location: Kerala, India

Scope of works:

Project Management and
Healthcare Consultancy

Project Highlights:

Critical care areas and surgical complex including 5 OTs for
400 bedded hospital at Thodupuzha , Kerala.

Health Facility
Renovations

Project: NS Hospital

Location: Kerala, India

Scope of work : Turnkey Design of ICU and CSSD

Project Highlights : Healthcare space and MEP Design of 4 ICUs and CSSD for the hospital at Kollam, Kerala



Project: Parumala Hospital

Location: Kerala, India

Scope of work : Turnkey Design of Emergency Dept.

Project Highlights : Health space planning , MEP Design and Project management of 6000 sq.ft Accident and Emergency unit and ICU at Parumala Hospital Old Block, Thiruvalla



Health Facility Renovations

Project: Amala Hospital

Location: Kerala, India

Scope of work : Turnkey Design of Bone marrow transplant

Project Highlights : Health space planning and MEP Design of 6000 sq.ft Bone Marrow Transplant unit and ICU at Amala Hospital Sacred Heart Block, Thrissur.



Project: State Virology Lab

Location: Kerala, India

Scope of work : Project Advisor for State virology lab

Project Highlights : Technical Consultant for the virology lab planned at Trivandrum, Kerala

Project: Defence lab

Location: Bahrain

Scope of work : Clinical Lab Space Design.

Project Highlights : An initiative by the Royal Bahraini Air force ..



Project: Ramaiah Memorial Hospital

Location: Karnataka, India

Scope of work : Turnkey Design of Stem cell lab

Project Highlights : Health space planning and MEP Design of 3000 sq.ft Haemopoetic Stem cell lab unit at M S Ramaiah Memorial Hospital, Bengaluru.



RAMAIAH
Medical College

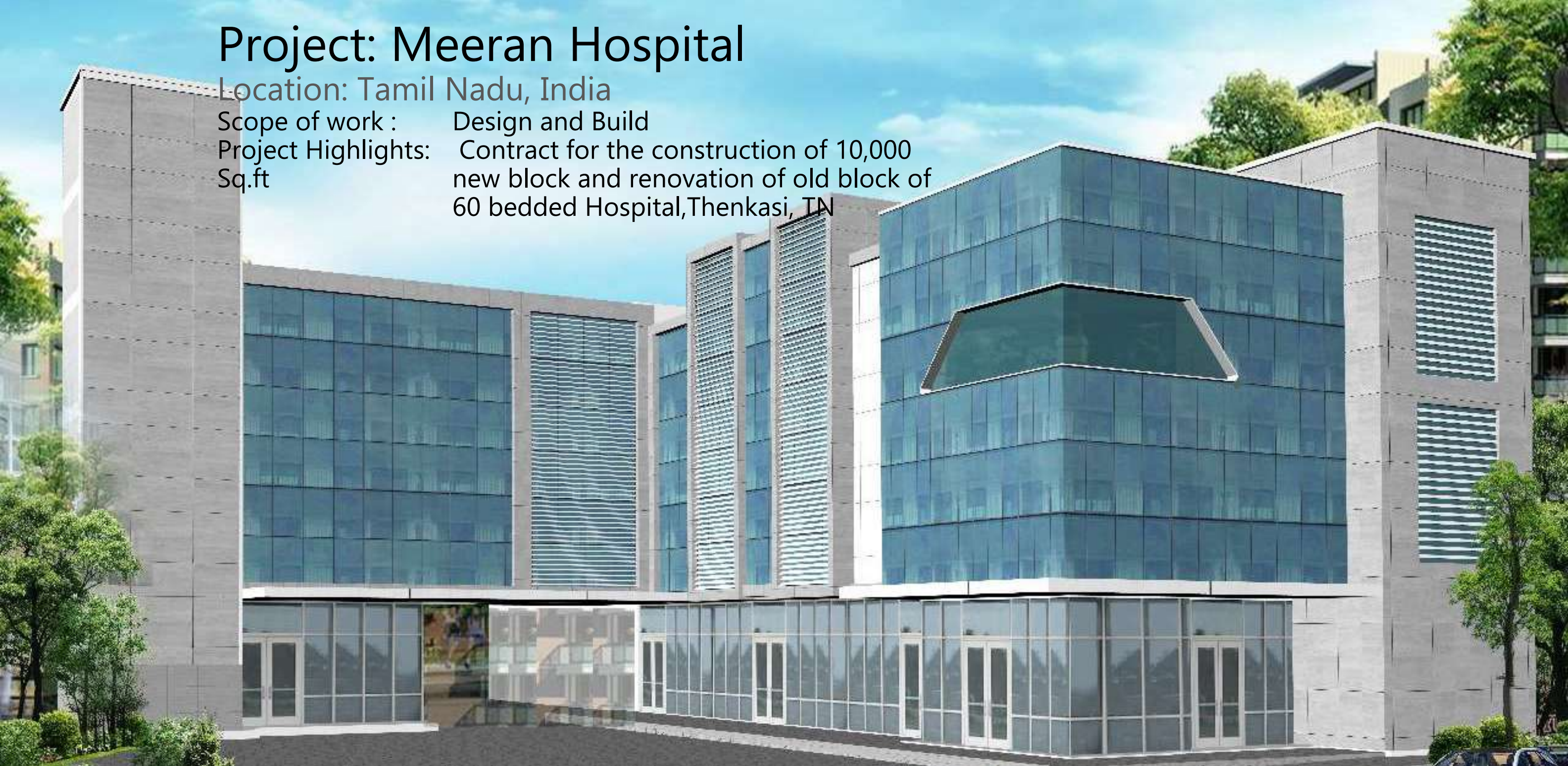
Special Facilities

Project: Meeran Hospital

Location: Tamil Nadu, India

Scope of work : Design and Build

Project Highlights: Contract for the construction of 10,000 Sq.ft new block and renovation of old block of 60 bedded Hospital, Thenkasi, TN





Project: Thayyil Clinic

Location: Kerala, India

Scope of work : Design and Build

Project Highlights : 3000 Sq.ft specialty clinic
at Kollam, Kerala.



Project: KIMS hospital renovations

Location: Kerala, India

Scope of work : Design and Build of critical care and clinical areas

Project: Neuberg Anand Lab

Location: Kerala, India

Scope of work : Design and Build Contract

Project Highlights : D&B of Lab facility at Kowdiar, Trivandrum



AH

Project: Anupama Hospital

Location: Kerala, India

Scope of work : Design and Build Contract

Project Highlights : D & B of Critical care and surgical complex at 50 bedded Hospital at Poovar, Trivandrum, Kerala

Project: Hair Fair Clinic

Location: Kerala, India

Scope of work : Design and Build Contract

Project Highlights : D&B of Operation theater for the premium
Cosmetology clinic at Kochi



Project: SNMMH X-ray Hospital

Location: Kerala, India

Scope of work : Design and Build Contract

Project Highlights : D & B of surgical complex at 100 bedded
Hospital at Cherthala, Kerala

Project: AM Naik Charitable Trust Hospital

Location: Maharashtra, India

Scope of work : Design Peer Review of Engineering services and Healthcare spaces

Project Highlights : 100 bedded hospital by L&T at Powai, Mumbai



Project: Sardar Vallabhai Patel Institute of Medical Sciences & Research (SVPIMSR)

Location: Gujarat, India

Scope of work :

Peer Review of MGPS Design

Project Highlights :

1200 bedded super specialty hospital at Ahmedabad, Gujarat..

**Peer Review &
Value Engineering**

Project: KIMS Care

Location: Um Al Hassam, Bahrain

Scope of work : Design Peer Review of Engineering services and Healthcare spaces

Project Highlights : 100 bedded hospital by KIMS at Um Al Hassam, Bahrain



Project: KIMS Oman

Location: Duqm, Oman

Scope of work : Peer Review of Engineering services and Space planning

Project Highlights : 100 bedded hospital at Duqm, Oman..



Ongoing Projects

as on August 2023

Scope of work (STAT)	Region /Location	Project	No. of Beds	Total Area	Status
Architectural and MEP Design Review/MEP Redesign if required	Bahrain	Royal Bahrain Hospital	75	2,60,000 SFT	Ongoing
MEP PMC/ Value Engg and MGPS design	Ghaziabad-Indirapuram, UP	Yashoda Medicity	1200	18,00,000 SFT (phase 1 & 2)	Construction Ongoing
MEP Design/PMC/Hospital Consultant	Assam	3 Blocks of Bongaigaon Medical College Hospital - Assam	300	-	Planning stage
MGPS Audit/Project Management	Telengana	KIMS Secunderabad	716	5,50,000 SFT	Works Ongoing
Design of MGPS/ Review of MEP Design	Telengana	Sunshine Hospital at Begumpet (KIMS Group)	350	2,80,000 SFT	Design Almost completed
MEP – Masterplan/Base Build and Interior	Tamilnadu	KIMS - Nagercoil	300	2,50,000 SFT	Planning stage
Project Management (Civil/MEP and Fitouts)	Kerala	Azeezia Medical College Hospital	400	3,60,000 SFT	Ongoing
Design Review & Space planning (RDS and RLS)	Kerala	NS Oncology Block	150	1,25,000 SFT	Ongoing

Scope of work (STAT)	Region /Location	Project	No. of Beds	Total Area	Status
Construction Project Management Services	Tamilnadu	KIMS Nagercoil Institute of Medical Sciences	250	2,20,000 SFT	Ongoing
Arch. Review/MEP Design/ Hospital Consultant	Kerala	Azeezia Medical College -Palakkad	400	4,00,000 SFT	Planning stage
Construction Project Management	Kerala	Medical Trust Hospital – New Block , MG Road- Kochi	200	160,000 SFT	Ongoing
Masterplan/Space Planning/MEP and Medical Eqpt. Planning	Karnataka	Nenjappa Group – Davengere/ Shivamoga Cancer Block	140	1,00,000 SFT	Ongoing
Turnkey Design Consultants	Tamil nadu	Kani Hospital for Dr. Girish Deepak	80	50,000 SFT	Planning stage
MEP Design/Arch Review/ Medical Equipment planning	Kerala	Mar Chrysostam Mission Hospital- Kumbanad, Kottayam	90	70,000 SFT	Ongoing

Scope of work (STAT)	Region /Location	Project	No. of Beds	Total Area	Status
MEP Design	Chennai, Tamil nadu	MGM Hospital – New Block	350	3,50,000 SFT	Design Ongoing
Design Review, RDS and RLS for medical areas	Kerala	Kuthuparambu District Hospital	150	1,00,000 SFT	Final Works in progress
Hospital Consultant	Kerala	SCTIMST (Govt. Of India, Referral Hospital)	205	2,50,000 SFT	MEP Installation Ongoing
PMC	Kerala	YANS Inst. Of Medical Sciences	260	2,30,000 SFT	Substructure work going on
Arch. Review/MEP Design/ Hospital Consultant	Tamil nadu	Shifa Institute of Medical Sciences	150	120,000 SFT	Planning stage
MGPS & PTS Design/PMC	Andhra Pradesh	KIMS Sai Shehadra	120	95,000 SFT	Ongoing
Energy Audit/ Evaluation / Correction and PMC	Kerala	Sree Narayana Institute of Medical Sciences	500	3,00,000 SFT	Ongoing

Scope of work (STAT)	Region /Location	Project	No. of Beds	Total Area	Status
MGPS Design/PMC	Maharashtra	KIMS Heera Nandini, Thane	350	300,000 SFT	Ongoing
MGPS & PTS Design/PMC	Karnataka	KIMS -Bengaluru	300	250,00 SFT	Ongoing
MGPS Design/PTS/PMC	Maharashtra	KIMS Manavata- Nashik	200	150,000 SFT	Ongoing
Masterplan/Space Planning/MEP and Medical Eqpt. Planning	Jammu & Kashmir	Shafqat Rehab Surgical Centre – Bemina	50	40,000 SFT	Ongoing
Space Planning /MEP Design /PMC/ Commissioning	Kerala	Cosmetiq Hospital	50	30,000 SFT	Construction in progress
Architectural Review and MEP Design	Uttar Pradesh - Jhansi	Care and Cure Hospital	30	25,000 SFT	Design Development stage

Scope of work (STAT)	Region /Location	Project	No. of Beds	Total Area	Status
Design	Kerala	KSHB Hospitals for State Government (5 Locations)	600	5,00,000 SFT	Design development Stage
Design	Kerala	Suntec - IT Park		2,50,000 SFT	MEP Design Ongoing
Turnkey Consultants	Kerala	St. Joseph Hospital	100	70,000 SFT	Planning stage
Clinical Program/ Design Guidance	Kerala	Thodupuzha District Hospital	80	70,000 SFT	Planning Stage
Design	Kerala	Trivandrum International School – Extension Block		1,25,000 SFT	Design development Stage
Design	Kerala	Cochin International School			MEP Design Ongoing
Design	Kerala	Mupathadam Clinic		20,000 SFT	Design Development stage

PROJECT Management for KARNATAKA GOVT. – Construction of ICUs in Taluk/Dist. Hospitals

REGION/ LOCATION

No of HOSPITALS

Total Number of Beds

YADGIR , BIDAR
&
KALBURGI

12 HOSPITALS

442 beds

BELGAVI
&
VIJAYAPURA

18 Hospitals

900 beds

DHARWAD & HAVERI

22 Hospitals

940 beds

Various DISTRICT
Hospitals

4 hospitals

125 beds

TOTAL 2407 beds



Our Milestones



15
Million

Sq.ft of Healthcare space

Client Testimonials

"STAT has a good team comprising of certified engineers and management professionals who are continuously updated with technological advancements, display professionalism at work and complete the project tasks within the stipulated time."

Dr. M.I.Sahudulla
Chairman & Managing Director
KIMS Healthcare Group



"STAT Consultancy with its perfect blend of expertise and experience is a recommended choice in PMC for Healthcare Industry"-

Fr .Johnson Vazhapilly,
CEO
Rajagiri Hospital



I know Mr Hariprasad for the last 12 years. He is the director of stat consultancy, a leading project management consultancy in India, especially in the field of Health sector. STAT is the project management consultancy of Dr K M Cherian Institute of Medical Sciences pvt ltd, Chengannur. The qualities, knowledge and dedication of the leader makes an organisation best in the society. That we can see in Mr Hariprasad. I wish you all the best

Fr Alexander Kudarathil
Managing Director



STAT has been working with us for the last couple of years as a Hospital consultant and Project Management consultant for our new block. We wish them all success in their future endeavors.

Fr.Thomas Mangalathu
Director
St.Thomas Hospital



Client Testimonials



"STAT consultancy executed the responsibilities undertaken by them in a very professional way and helped us to achieve our targets"

Fr. M.C.Poulose
CEO
Parumala Hospital



STAT was professional in its approach to providing an accurate scope of works and price for providing the Consultancy Services. STAT with its core expertise in operating room and clean room setting up have done a meticulous finish. Throughout the project STAT was able to guide us with creative ideas to improve the look and function of our hospital. On behalf of Devi hospital, we are proud and happy of the services provided by STAT consultancy

Deepak Madhavan
Director, Devi Hospital Pvt Ltd



STAT has been working with us for the completion of Meitra Hospital as a hospital consultant and project management consultant. We are confident that stat consultancy can add value to any major projects coming in the Healthcare industry.

Dr.Ali Faizal
Director
Meitra Hospital



STAT has a good team of engineers of all grades to perform professionally to complete the project task within the schedule time and to our satisfaction

Dr. Joseph George
Managing Director
Poyanil Group of Hospitals





STAT

Planners | Engineers | Consultants

Milestones

350 +
Operation
Theatres



5000+
ICU beds



30+
Clinical Labs
Completed



55000+ KVA
Power delivered



33000+ TR
HVAC plants



100+
Major Equipment
Planned and Installed



Contact Us



Planners | Engineers | Consultants

www.statconsultants.com

Email : mail@statconsultants.com

Phone : +91 471 272 2229

+91 944 600 1295

+91 70340 55444

Head Office : 5Th Floor, PTC Grandeur,
YMR Jn., Kowdiar P.O.
Thiruvananthapuram,
Kerala , India. PIN 695003

Regional Office:
B4/205, Safdargunj Enclave,
New Delhi, Delhi – 110016

Branch :TC 5/432(1), Kailas,
Alathara, Sreekaryam P.O.
Thiruvananthapuram, Kerala, India.
PIN 695017